

SHUBB

— CAPOS —

INTRODUCING

Pava Pearl



2022 catalogue



Still the best!

Millions of musicians will settle for no less.

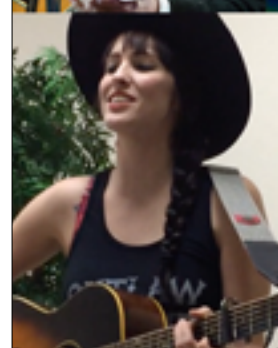
Since 1980 the Shubb capo has set the standard against which all others must be measured. Its patented locking action provides an unrivalled combination of power, speed, accuracy and ease of use. One smooth flip of the lever locks it securely in place ...and removes it just as quickly.

Precisely machined and carefully hand assembled, a Shubb capo is manufactured without compromise. Simply holding one in your hand conveys a sense of quality. Snapping it solidly onto a guitar neck and playing without having to retune, confirms its reputation for excellence.

- **It presses the strings exactly like your fingertip.**
Specially formulated rubber sleeve material acts just like your fingertip, so the strings are not bent out of tune.
- **It closes onto the neck just like your hand.**
Not like a belt, or a clothespin, or a vise, or a pair of pliers. The strings are not pulled out of tune.
- **Its pressure is totally adjustable and repeatable.**
Too much pressure stretches strings sharp, too little muffles tone. Total adjustability is an essential feature of a serious capo, and with the Shubb that pressure is repeatable each time.

The result:
no retuning is necessary.

learn more at: shubb.com/bestcapo



Available in these models, to fit your instrument:

	STANDARD		CAPO ROYALE			Capo Noir	original	<i>Lite</i>	<i>Fine Tune</i>
	polished nickel	brushed nickel	gold	rose gold	Paua Pearl	black chrome	plain brass	aluminum	stainless steel
1 Steel String Guitar <i>fits most acoustics and electrics</i>	C1	C1n	C1g	C1rg	C1p	C1k	C1b	L1	F1
2 Nylon String Guitar <i>wide, flat fretboard</i>	C2	C2n	C2g	C2rg	C2p	C2k	C2b	L2	
3 12-String Guitar <i>or any steel string guitar with a wide neck</i>	C3	C3n	C3g	C3rg		C3k	C3b	L3	F3
4 7.25" radius <i>for some (but not most) vintage electrics</i>	C4	C4n	C4g	C4rg		C4k	C4b	L4	
5 Banjo (also fits mandolin and bouzouki) <i>flat fretboard radius fretboard</i>	C5 C5-r	C5n C5n-r	C5g C5g-r	C5rg C5rg-r		C5k C5k-r	C5b C5b-r	L5 L5-r	F5 F5-r
dobro							C6b		
"Vintage" for extra-thick necks									
Partial Capos <i>covers 5-4-3 covers 5-4-3-2-1</i>	C7 C8						C7b C8b		



Standard Shubb Capos are made of brass, and nickel plated: available in either **polished nickel** (mirror finish) or the more subtle **brushed nickel** (satin finish).

standard SHUBB CAPO

When the Shubb Capo was introduced about 40 years ago, guitarists throughout the world fell in love with it. They're still in love with it today. While its basic mechanical principle has remained the same, we've given it a few tweaks over the years. In 2013 it received its most dramatic tweak of all when we upgraded our most popular models to include the roller, formerly available only on our stainless steel models.

Capos continue to come and go, but the fact remains: for the guitarist who is serious about quality and intonation, nothing but a Shubb will do.

www.shubb.com/capo

Capo Noir

For many years our most requested combination of features has been "can I get the capo in black with the roller?" And now you can.

This elegant black chrome capo is a favorite for anyone who prefers an inconspicuous look onstage or off. It is especially well suited to instruments with black hardware or dark finished instruments. A *must-have* for anyone who likes the *stealth* look.

www.shubb.com/noir



C1k

CAPO ROYALE

Gold plating has always been an attractive finish for musical instruments and accessories. While gold is undeniably beautiful, it is not at all durable; it will wear off far too easily and quickly. And it is famously expensive.

But now we have researched a high-tech finishing technique that utilizes titanium to produce a capo that has all the beauty of real gold, but is as durable as any metal finish you will ever find. These capos will shine like gold for many, many years.

www.shubb.com/royale



Paua Pearl

Paua is the Maori (native New Zealand) name for a species of abalone whose shells are the most beautiful and colorful. Fine jewelry crafted from the shells are known as Paua Pearls.

When we came up with this new finish, its dazzling iridescence reminded us of Paua Pearls, and so that became its name. It uses the same durable titanium process as our other Capo Royale models.

And like the Paua shell itself, no two are exactly alike. The patterns of color occur randomly, so no one else's Paua Pearl capo will look exactly like yours!

www.shubb.com/paua



C1g— gold



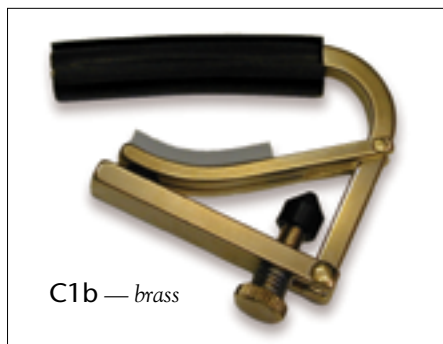
C1g— rose gold



Whenever you change something there will be those who prefer the original. In 2013 we upgraded our C-series, nickel plated capos to include the deluxe roller design, but for those who may prefer a retro version, we have kept the plain brass capo in its original design.

Our plain brass capos are uncoated, so they will darken with time. Many fans of brass prefer this look, especially for use on vintage instruments.

www.shubb.com/original



C1b — brass

SHUBB partial capos

Now available in both plain brass (original design) and polished nickel finish, featuring the improved roller design!



C7



C7b



C8



C8b

Our C7 and C7b partial capos skip the outside string and covers the next three. In the most common use this emulates DADGAD open tuning, while leaving the string tension unchanged, in traditional tuning.

Our C8 and C8b partial capos skip the outside string (usually the low E string) and cover the other five. This emulates a drop-D tuning, but a full step higher.

www.shubb.com/partial

SHUBB *Lite*

Half the Weight of an original Shubb Capo.
Made of aluminum, **it weighs less than one ounce!**

Is a lightweight capo right for everyone?

Not necessarily. Some people associate a certain amount of heft with quality, and feel that it is necessary to properly do the job. On the other hand, many feel that the lighter a capo is, the better. In some cases the weight or setup of the instrument might suggest one or the other.

It's a matter of opinion and of choice; for the many players who prefer a lighter weight capo, the Shubb Lite is the right tool for the job!

www.shubb.com/capos/lite



COLORS!

In addition to the traditional silver aluminum color, Shubb **LITE** capos are available in these strikingly vivid colors: blue, violet, green, gold, and red.

SHUBB Capo for Ukulele

The ukulele is experiencing a renaissance. Many new players are taking up the instrument every day, and accomplished players are pushing the envelope. As the styles and demands develop, these pioneers are looking to Shubb for all the advantages of our unique capo design — clearly the right capo for the ukulele!

Available in plain brass, and in LITE aluminum
in six vibrant colors!

www.shubb.com/uke



SHUBB *Fine Tune* CAPO



For many years we have been aware of some players who prefer a U-shaped, screw operated capo that can be stored behind the nut. For these players, we have now designed the Shubb Fine-Tune Capo. It represents the highest quality of craftsmanship and materials, and offers a few unique features not seen before.

- Its innovative adjusting knob makes it the most ergonomic screw operated capo.
- Specially developed rubber padding adds resilience to the capo's tightening action for finer control. Being absolutely inert, it will not mark an instrument
- The knob maintains a fixed relationship with the frame, for improved ease of use, and for the lowest profile when stored behind the nut.
- The knob's six surfaces are numbered, providing a visual reference to more easily and accurately reproduce your ideal pressure.
- Greater contact area between screw, frame, and knob ensures that the fit will never become loose and sloppy.
- Rubber bumpers and smoothly rounded edges protect the instrument.
- New, improved locking latch prevents accidental opening.
- New, resilient sleeve accommodates a range of fretboard radii.
- Carefully machined to the closest thread tolerance.
- Highly polished stainless steel with attractive abalone inlay.

www.shubb.com/finetune

the SHUBB Fifth String Capo for Banjo

Since 1974 it has been an established fact that the only fifth string capo worth installing on a good banjo is a Shubb.



It operates on a lever principle, not a spring, thereby providing enough pressure to hold the string solidly in place without muting the tone. It slides on a slim, dovetailed bar that mounts flush to the neck, making it sturdy and unobtrusive. The compact bar requires only two mounting screws and occupies less space on the neck than our earlier version.

The old style with longer bar (greater range, 3-point mount) is still available as a special order.

FS (nickel plated)
FSb (plain brass)
FSg (gold plated)

www.shubb.com/fs

the SHUBB Capo for Dobro®



Based on the same patented mechanical principle as our regular guitar capo, our Dobro capo locks solidly to the neck to provide great tone. It aligns quickly and precisely by touching the fret, not by eye. No other capo even resembles it. User-adjustable to best fit the string action and neck size of individual instruments.

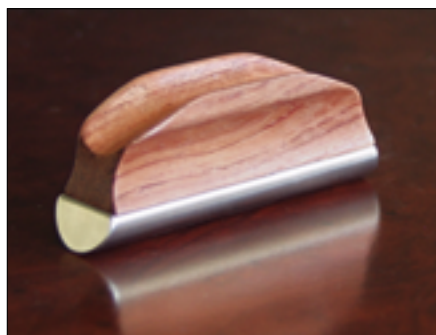
www.shubb.com/dobro

sku: C6b

"Dobro" is a registered trademark of the Gibson company. It is used here to identify the leading brand of the style of instrument this capo is designed for, and does not imply that the capo itself is a product of the Gibson company.

The GS guitar steel

A unique concept in guitar steels!



The handle is crafted of fine hardwood for comfort and control

The playing surface is machined of stainless steel for clear tone and durability.

- The contoured top allows your hand to be in a relaxed, natural position.
- The stainless steel edge is designed for clean pulloffs.
- The wood grain provides a good grip for best control.
- The hardwood handle is weighted for proper balance.

Besides its innovative use of materials, the sculpted top allows the hand to grip the bar in an amazingly comfortable and natural position. From its edge, designed to deliver the clean pull-offs today's players love, to the weighted, counterbalanced hardwood handle, this bar designed by Gary Swallows is the most advanced guitar steel on the market.

www.shubb.com/gs

sku: GS1

Shubb-Pearse guitar steels

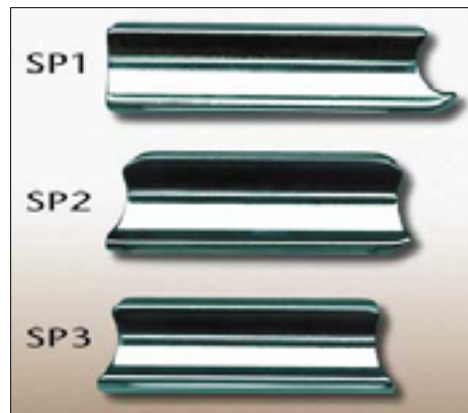
Solid stainless steel

SP and RR steels are made of solid stainless steel. No plating to wear off, harder playing surface, resists nicks and scratches, can be re-buffed.

Our guitar steels are designed by musicians with the special demands of today's playing styles in mind. They offer unique design features not found on any other bars, including cutaway ends for improved control, and a semi-bullet tip that facilitates movement across the strings.

sku	unique designs offering various features
SP1	The original Shubb-Pearse Steel designed by John Pearse is favored by many 8-string lap steel and Hawaiian guitarists for its extra length and cutaway bullet tip.
SP2	It's design suggested by Peter Grant, the extra mass (for tone) and double cutaway (for control) make this a versatile bar for various styles of resophonic and lap steel guitar.
SP3	Designed by Sally Van Meter for playing bluegrass, or any of today's demanding slide guitar styles. It's built for speed, precision, control, and great tone.

www.shubb.com/sp

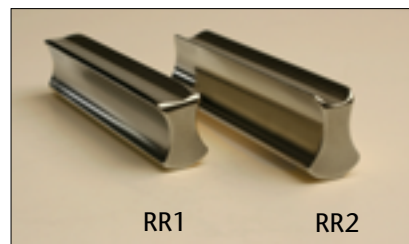




Robert Randolph guitar steels

Made to the specifications of the steel guitar sensation, these are the largest and heaviest of our bars.

sku	
RR1	5.2 ounces
RR2	6.4 ounces



Solid stainless steel!

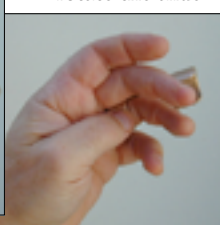
www.shubb.com/randolph

SHUBB Reversible Guitar Slide

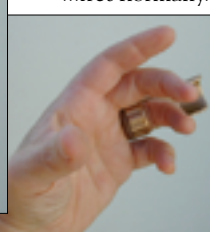
Play slide...



...rotate the slide...



...fret normally.



An elegant solution to an old problem: how to combine slide guitar playing with normal fretting. With its patented 2-piece swivel action, the Shubb Reversible Slide gives you the best of both worlds!

Here's why it works so well: the brass sleeve section rotates... while the delrin ring section remains in place on your finger.



Each slide comes with **four ring sizes** to ensure a good fit.

www.shubb.com/axys

sku: AX

Formerly called the Axys, invented by Brooks Story.

SHUBB string winder

Ergonomic, attractive, durable, and efficient.

Our string winder feels good in your hand, and operates smoothly. It resembles a nice chess piece, and its mechanical advantage ensures that it will continue to provide smooth operation for many years.

Unlike typical string winders, its crank shaft extends the length of the handle, so it won't loosen, won't wobble, won't bind up.



www.shubb.com/winder

sku: W1

SHUBB transposing guide and capo placement guide

This handy little slide chart shows all the note and chord equivalents when changing from one key to another. Just line the two keys up next to each other for an instant visual reference. Flip it over, and the other side serves as a capo placement guide.

Made of durable plastic, it will fit easily in your pocket. A must have item for any musician, composer, or music student.



www.shubb.com/transposer

sku: TG1

replacement parts

A Shubb Capo is made to last a lifetime, but with long and hard use, the rubber and Delrin parts can begin to show wear. But you don't throw away a Mercedes when it needs new tires. To streamline stocking we provide sleeves in one size: the longest, 2.25 inches. For steel string guitars or banjos they should be cut down to size.

Sleeves and delrin caps are sold to dealers in packs of 12, and are intended to be sold or given out individually. We encourage all stores to keep a supply on hand.

sku

R12 (pack of 12 capo sleeves)
DC12 (pack of 12 delrin caps)

capo display

Our attractive point-of-purchase capo display mounts on a slatwall, or stands on a countertop. It can hold up to 60 capos, and will hold our steels and slides, too.

All of our products are packaged in recyclable vinyl clamshells, which are easily opened and reclosed so that the product can be examined by a customer. We feel that this is an important feature to be able to demonstrate the product without damaging the package.

www.shubb.com/trade/pop.html



dealer support materials

We provide a wide variety of dealer support materials, some free of charge.

- capo display boards showing an overview of the various models and styles
- attractive 17x24 banner, (*at right*)
- wire rack capo display, holds up to 60 capos, steels, or slides
- bumper stickers
- various promotional items such as pens, tote bags, etc..

[check our website for details...](#)



17x24 banner

Shubb logo clothing

In response to fans whose brand loyalty warms our hearts, we offer these high quality clothing items that feature our logo and artwork.

T-shirts: logo and Capo Noir

Baseball caps: embroidered logo.

Jackets: black with colorful embroidery on back and front.

Please check our website for currently available sizes, colors, and styles, or for additional clothing items as they become available.

[check our website for details...](#)

For many years our website has been providing up to date information about our products and our company.

To further support our distributors and dealers, we have established a specialized **Trade Connection** site at:

www.shubb.biz

It's also easy and dynamic to keep in tune with us on social media:

 [www.https://www.instagram.com/shubbcapos/](https://www.instagram.com/shubbcapos/)

 www.facebook.com/shubbcapos

 <https://www.youtube.com/user/shubbcapos>

 www.twitter.com/shubbcapos



Rick Shubb

At age fourteen I took up the guitar, inspired by the playing of Merle Travis. At fifteen, a recording of Earl Scruggs hit me like a thunderbolt, and I switched to banjo. During my 20s and 30s I was among only a handful of stalwarts scratching out a living playing bluegrass on the West Coast. I imagined that would continue to be the direction my life would take; playing and teaching music combined with some work in graphic arts, for which I've always had a knack.

One night at a banjo lesson, I described an idea I had for a fifth string capo to my student, an auto mechanic named Dave Coontz. A week later he had built me a prototype. I installed it on my own banjo and tried it out on gigs. After several weeks of refinement and many prototypes, we decided to make 100 of them. We were going into business.

Making and selling fifth string capos was far from a full time job, and I still pursued a career in music and art. But about five years later we came up with a design for a guitar capo that would change that, along with everything else for me. Unlike prior capos that were based on some existing clamp or strap, the new capo closed onto the guitar neck just like your hand. Not only did it feel good to use, it remedied the tuning issues associated with using a capo. The first time I closed the prototype onto my guitar neck, I knew what I would be doing for the rest of my life.

I remain a musician at heart. I perform only occasionally now, but I usually try to keep in practice. And I love being in the music products business. I especially love being able to enhance the musical experience for so many players. From weekend hobbyists to legendary superstars, musicians are *my people*.

SHUBB
— CAPOS —